

Report of North East Divisional Community Safety Partnership

Report to Outer East Area Committee

Date: 2nd July 2013

Subject: North East Divisional Community Safety Partnership Annual Report

Are specific electoral Wards affected?	<input checked="" type="checkbox"/> Yes	<input type="checkbox"/> No
If relevant, name(s) of Ward(s): Garforth & Swillington Kippax & Methley Temple Newsam Crossgates & Whinmoor		
Are there implications for equality and diversity and cohesion and integration?	<input type="checkbox"/> Yes	<input checked="" type="checkbox"/> No
Is the decision eligible for Call-In?	<input type="checkbox"/> Yes	<input checked="" type="checkbox"/> No
Does the report contain confidential or exempt information?	<input type="checkbox"/> Yes	<input checked="" type="checkbox"/> No
If relevant, Access to Information Procedure Rule number: Appendix number:		

Summary of main issues

1. To update ward members of the overall performance of the North East Divisional Community Safety Partnership and Neighbourhood Policing Teams for 2012/13.
2. To provide an overview of the work undertaken by the partnership within the locality to reduce crime and disorder.

Recommendations

3. The Area Committee is asked to note the contents of this report of the North East Divisional Community Safety Partnership.
4. Members are asked to continue supporting the Divisional Community Safety Partnership in relation to prioritising the new Safer Leeds Priorities and tackling Burglary Dwelling during 2013/14 through partnership work at neighbourhood level.

1. Purpose of this report

The report will focus on the following key issues:

- Update members on progress and outputs of the neighbourhood management tasking arrangements
- Report on thematic sub groups and activities
- Report on the performance of the North East Police Division and partnership
- Summary of ward crime statistics, public confidence and user satisfaction
- Report on multi agency 'Operation Champions'
- Report on agreed community initiatives funded via Proceeds of Crime confiscations (POCA)

2. Background information

2.1 This report provides Members of the Area Committee with an overview of the performance of the North East Divisional Community Safety Partnership and ward based Neighbourhood Policing Teams. It will also include details of the key initiatives that have been delivered in local communities to reduce crime and disorder. The report focuses upon the period 1st April 2012 to 31st March 2013.

3. Main issues

3.1 Performance Framework

3.2 The Divisional Community Safety Partnership (DCSP) will continue to develop activity and management performance against strategic outcomes of the city, defined by The Safer and Stronger Communities Board Partnership plan 2011-2015 which will focus on delivering the following strategic priorities:

- Reducing crime levels and its impact across Leeds.
- Effectively tackle and reduce anti-social behaviour in our communities.

3.3 Safer Leeds has six key priorities for 2013/14

- Reducing burglary and anti-social behaviour
- Tackling domestic abuse
- Reducing re offending
- Improving our understanding of child sexual exploitation
- Dealing with dangerous 'Legal Highs ' and cannabis
- Strengthening community engagement and support to victims

3.4 Attached is an updated structure chart for the North East Divisional Community Safety Partnership (see Appendix A) with details of the relevant lead officers. The structure is continuously reviewed to ensure delivery against new priorities.

4. Operation Champion

4.1 A number of 'multi agency operation days of action' have been carried out across the ward during 2012/13 and have been based around themes and deployed into areas of concern. We will continue to deliver operations during 2013/14 with a minimum requirement of four operations per year per Neighbourhood policing team.

5. Operation Outwork

5.1 As the scrap metal market maintains its consistently high prices the theft of metal continues to be a problem across the North East Leeds Policing area. Whether it is cable theft, burglary other, general theft non specifics or full blown burglary dwellings the target is often metal in order for the criminals to cash in.

5.2 Joint partnership operations between Neighbourhood Policing Teams and the Environmental Locality Team were delivered on a monthly basis and will continue through 2013. These operations include setting up road checks and routine stopping of waste carrier vehicles in order to complete checks on such vehicles. Police staff conduct normal police checks on all passengers and pay attention to the condition of such vehicles alongside East North East Environmental Locality team staff that provide trained expertise regarding waste carrier licence/rules and conditions.

6. POCA

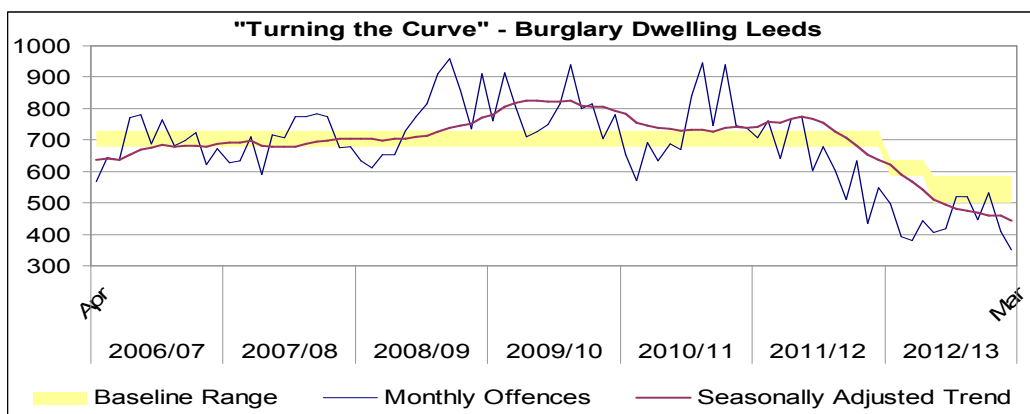
6.1 The North East Division allocated a further £29,000 and carried forward £9187.85 from 11/12 totalling £38,197.85 funding confiscated from criminals under the Proceeds of Crime Act to the Divisional Community Safety Partnership during 2012/13 to support local groups with community projects/activities. In total, across the whole division, we approved and funded 123 applications and spent £33,243. We continue to receive positive feedback from the community. Information regarding the awards continues to be advertised in the Neighbourhood Management / Neighbourhood Policing Team newsletters and on the police Neighbourhood Policing Team websites. We will be continuing the scheme into 2013/14. (Appendix B provides a summary of projects funded in the Outer East Area).

7. Confidence and Satisfaction

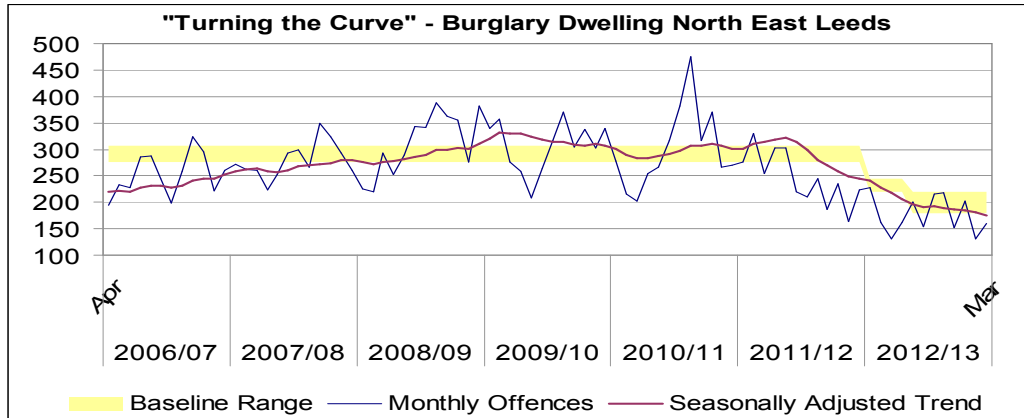
- 7.1 North East Leeds continues to have the highest public confidence in local policing during 2012/13 at 60.5% (March 2013) compared with the West Yorkshire force average of 53.9%.
- 7.2 Operation Confidence continued during 2012/13 with two editions and is a contributing factor to the high rates of public confidence. The North East Division produces 11 neighbourhood management newsletters detailing partnership activity around crime and grime within the Neighbourhood Policing Team and delivers to approximately 128,000 households. The initiative has been funded by North East Police Division, East North East Homes, Safer Leeds Partnership and Aire Valley Homes, we are anticipating securing funding for 2013/14 for a further two editions whilst investigating other options alongside social media such as Facebook and Twitter to improve engagement with local communities.

8. Burglary Dwelling

- 8.1 Burglary Dwelling remains a key priority in relation to allocation of resources both staffing and financial. Tackling burglary dwelling remains the key priority within the division and across the whole of Leeds, we are working closely with Safer Leeds Strategic Burglary Group and partner agencies to maximise opportunities for closer working, sharing good practise and continue to deliver initiatives at a local neighbourhood level.
- 8.2 Overall a very successful year in 2012/13 there were 5,305 recorded domestic burglaries in Leeds, down 30.8% when compared with the previous year equivalent to 2357 fewer victims.



- 8.3 Overall year to date burglary offences for North East Leeds are down 28.35 % on the same period last year (833 less offences).



9. Ward Risk Matrix

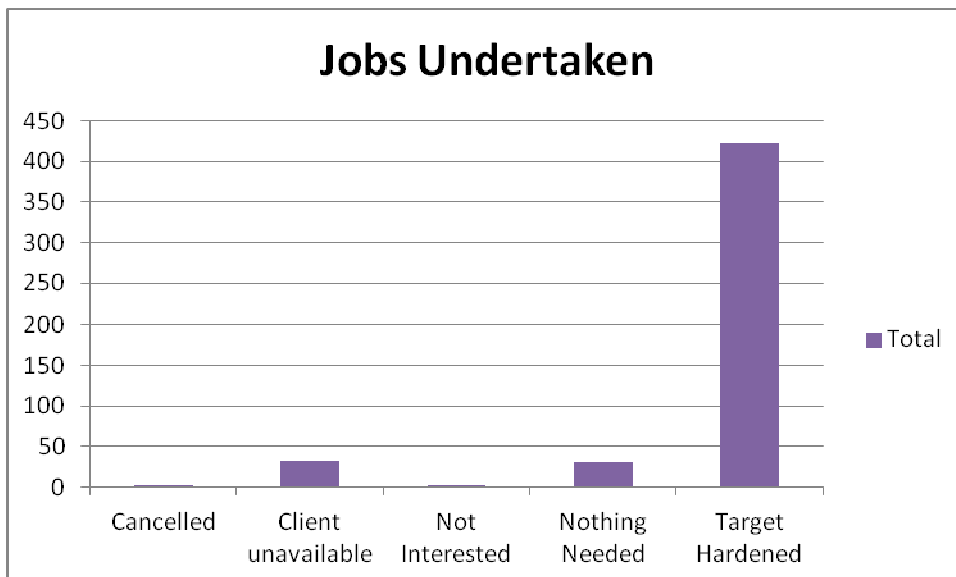
9.1 During 2012/13 there were nine strategic localities of concern. The Outer east area committee area had no localities of concern, The strategic burglary group are currently reviewing best practise in relation to partnership work and reviewing the localities of concern for 2013/14.

Ward	Apr-12	May-12	Jun-12	Jul-12	Aug-12	Sep-12	Oct-12	Nov-12	Dec-12	Jan-13	Feb-13	Mar-13	12 Month Total	12 Month % Change	3 Month Change	Colour Key
Hyde Park & Woodhouse	Very High Concern	Very High Concern	Very High Concern	Very High Concern	Very High Concern	Very High Concern	Very High Concern	Very High Concern	Very High Concern	Very High Concern	Very High Concern	Very High Concern	328	-45.1%	-43.7%	Very High Concern
Burmantofts & Richmond Hill	Very High Concern	Very High Concern	Very High Concern	Very High Concern	Very High Concern	Very High Concern	Very High Concern	Very High Concern	Very High Concern	Very High Concern	Very High Concern	Very High Concern	289	-29.0%	-31.1%	Very High Concern
Gipton & Harehills	Very High Concern	Very High Concern	Very High Concern	Very High Concern	Very High Concern	Very High Concern	Very High Concern	Very High Concern	Very High Concern	Very High Concern	Very High Concern	Very High Concern	280	-26.9%	-1.4%	Very High Concern
Armley	Very High Concern	Very High Concern	Very High Concern	Very High Concern	Very High Concern	Very High Concern	Very High Concern	Very High Concern	Very High Concern	Very High Concern	Very High Concern	Very High Concern	252	-35.4%	-13.8%	Very High Concern
Headingley	Very High Concern	Very High Concern	Very High Concern	Very High Concern	Very High Concern	Very High Concern	Very High Concern	Very High Concern	Very High Concern	Very High Concern	Very High Concern	Very High Concern	230	-43.5%	-61.4%	Very High Concern
Roundhay	Very High Concern	Very High Concern	Very High Concern	Very High Concern	Very High Concern	Very High Concern	Very High Concern	Very High Concern	Very High Concern	Very High Concern	Very High Concern	Very High Concern	225	0.0%	-20.3%	Very High Concern
Killingbeck & Seacroft	Very High Concern	Very High Concern	Very High Concern	Very High Concern	Very High Concern	Very High Concern	Very High Concern	Very High Concern	Very High Concern	Very High Concern	Very High Concern	Very High Concern	221	-38.8%	-8.8%	Very High Concern
Middleton Park	Very High Concern	Very High Concern	Very High Concern	Very High Concern	Very High Concern	Very High Concern	Very High Concern	Very High Concern	Very High Concern	Very High Concern	Very High Concern	Very High Concern	215	11.4%	-21.0%	Very High Concern
Beeston & Holbeck	Very High Concern	Very High Concern	Very High Concern	Very High Concern	Very High Concern	Very High Concern	Very High Concern	Very High Concern	Very High Concern	Very High Concern	Very High Concern	Very High Concern	205	-3.3%	-22.2%	Very High Concern
Kirkstall	Very High Concern	Very High Concern	Very High Concern	Very High Concern	Very High Concern	Very High Concern	Very High Concern	Very High Concern	Very High Concern	Very High Concern	Very High Concern	Very High Concern	203	-43.3%	52.3%	Very High Concern
Cross Gates & Whinmoor	Very High Concern	Very High Concern	Very High Concern	Very High Concern	Very High Concern	Very High Concern	Very High Concern	Very High Concern	Very High Concern	Very High Concern	Very High Concern	Very High Concern	182	-38.9%	-10.0%	Very High Concern
Weetwood	Very High Concern	Very High Concern	Very High Concern	Very High Concern	Very High Concern	Very High Concern	Very High Concern	Very High Concern	Very High Concern	Very High Concern	Very High Concern	Very High Concern	182	-25.7%	7.5%	Very High Concern
Bramley & Stanningley	Very High Concern	Very High Concern	Very High Concern	Very High Concern	Very High Concern	Very High Concern	Very High Concern	Very High Concern	Very High Concern	Very High Concern	Very High Concern	Very High Concern	181	-56.9%	122.9%	Very High Concern
Temple Newsam	Very High Concern	Very High Concern	Very High Concern	Very High Concern	Very High Concern	Very High Concern	Very High Concern	Very High Concern	Very High Concern	Very High Concern	Very High Concern	Very High Concern	179	-27.8%	-20.3%	Very High Concern
Farnley & Wortley	Very High Concern	Very High Concern	Very High Concern	Very High Concern	Very High Concern	Very High Concern	Very High Concern	Very High Concern	Very High Concern	Very High Concern	Very High Concern	Very High Concern	175	-39.7%	-23.3%	Very High Concern
City & Hunslet	Very High Concern	Very High Concern	Very High Concern	Very High Concern	Very High Concern	Very High Concern	Very High Concern	Very High Concern	Very High Concern	Very High Concern	Very High Concern	Very High Concern	170	-17.5%	2.2%	Very High Concern
Pudsey	Very High Concern	Very High Concern	Very High Concern	Very High Concern	Very High Concern	Very High Concern	Very High Concern	Very High Concern	Very High Concern	Very High Concern	Very High Concern	Very High Concern	170	-30.6%	7.3%	Very High Concern
Calverley & Farsley	Very High Concern	Very High Concern	Very High Concern	Very High Concern	Very High Concern	Very High Concern	Very High Concern	Very High Concern	Very High Concern	Very High Concern	Very High Concern	Very High Concern	167	-32.1%	-35.0%	Very High Concern
Chapel Allerton	Very High Concern	Very High Concern	Very High Concern	Very High Concern	Very High Concern	Very High Concern	Very High Concern	Very High Concern	Very High Concern	Very High Concern	Very High Concern	Very High Concern	164	-46.9%	-18.8%	Very High Concern
Moortown	Very High Concern	Very High Concern	Very High Concern	Very High Concern	Very High Concern	Very High Concern	Very High Concern	Very High Concern	Very High Concern	Very High Concern	Very High Concern	Very High Concern	154	-35.3%	-50.0%	Very High Concern
Alwoodley	Very High Concern	Very High Concern	Very High Concern	Very High Concern	Very High Concern	Very High Concern	Very High Concern	Very High Concern	Very High Concern	Very High Concern	Very High Concern	Very High Concern	138	-15.3%	-32.4%	Very High Concern
Horsforth	Very High Concern	Very High Concern	Very High Concern	Very High Concern	Very High Concern	Very High Concern	Very High Concern	Very High Concern	Very High Concern	Very High Concern	Very High Concern	Very High Concern	127	-18.6%	-6.1%	Very High Concern
Morley North	Very High Concern	Very High Concern	Very High Concern	Very High Concern	Very High Concern	Very High Concern	Very High Concern	Very High Concern	Very High Concern	Very High Concern	Very High Concern	Very High Concern	121	-14.2%	34.6%	Very High Concern
Adel & Wharfedale	Very High Concern	Very High Concern	Very High Concern	Very High Concern	Very High Concern	Very High Concern	Very High Concern	Very High Concern	Very High Concern	Very High Concern	Very High Concern	Very High Concern	105	-34.8%	10.0%	Very High Concern
Harewood	Very High Concern	Very High Concern	Very High Concern	Very High Concern	Very High Concern	Very High Concern	Very High Concern	Very High Concern	Very High Concern	Very High Concern	Very High Concern	Very High Concern	91	4.6%	26.3%	Very High Concern
Rothwell	Very High Concern	Very High Concern	Very High Concern	Very High Concern	Very High Concern	Very High Concern	Very High Concern	Very High Concern	Very High Concern	Very High Concern	Very High Concern	Very High Concern	88	-11.1%	47.4%	Very High Concern
Morley South	Very High Concern	Very High Concern	Very High Concern	Very High Concern	Very High Concern	Very High Concern	Very High Concern	Very High Concern	Very High Concern	Very High Concern	Very High Concern	Very High Concern	82	-24.8%	-34.4%	Very High Concern
Wetherby	Very High Concern	Very High Concern	Very High Concern	Very High Concern	Very High Concern	Very High Concern	Very High Concern	Very High Concern	Very High Concern	Very High Concern	Very High Concern	Very High Concern	78	6.8%	125.0%	Very High Concern
Otley & Yeadon	Very High Concern	Very High Concern	Very High Concern	Very High Concern	Very High Concern	Very High Concern	Very High Concern	Very High Concern	Very High Concern	Very High Concern	Very High Concern	Very High Concern	69	-20.7%	-42.9%	Very High Concern
Garforth & Swillington	Very High Concern	Very High Concern	Very High Concern	Very High Concern	Very High Concern	Very High Concern	Very High Concern	Very High Concern	Very High Concern	Very High Concern	Very High Concern	Very High Concern	64	-28.9%	83.3%	Very High Concern
Ardsley & Robin Hood	Very High Concern	Very High Concern	Very High Concern	Very High Concern	Very High Concern	Very High Concern	Very High Concern	Very High Concern	Very High Concern	Very High Concern	Very High Concern	Very High Concern	63	-14.9%	-33.3%	Very High Concern
Guiseley & Rawdon	Very High Concern	Very High Concern	Very High Concern	Very High Concern	Very High Concern	Very High Concern	Very High Concern	Very High Concern	Very High Concern	Very High Concern	Very High Concern	Very High Concern	53	-39.1%	7.1%	Very High Concern
Kippax & Methley	Very High Concern	Very High Concern	Very High Concern	Very High Concern	Very High Concern	Very High Concern	Very High Concern	Very High Concern	Very High Concern	Very High Concern	Very High Concern	Very High Concern	50	-35.1%	-9.1%	Very High Concern

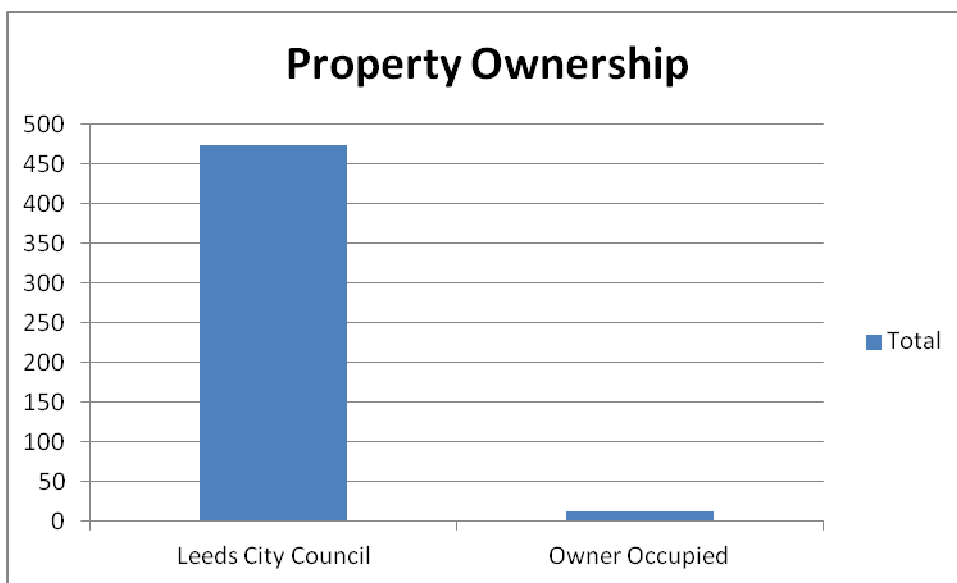
10. Whinmoor /Swarcliffe Burglary Project

10.1 At the beginning of the financial year the Whinmoor/Swarcliffe ward had seen an increase in burglary dwelling and was ranked the 9th worst out of the 33 wards across the city. A problem profile was produced by Safer Leeds which identified that the most common mode of entry was through snapping 'Euro profile locks'. From initial discussions with Aire Valley Homes funding was secured to develop an action plan to reduce burglary dwellings. Safer Leeds worked alongside Aire Valley homes and CASAC and delivered two target hardening projects in the top ten streets identified as hot spot areas. The target hardening consisted of replacement security locks, window locks and sash jammers as appropriate to each individual household. The total cost of the project was £44,913.79.

10.2 In addition to the target hardening project trembler alarms were purchased via Aire Valley Homes and residents were given two per property, alongside crime prevention advice given by the neighbourhood policing team. In addition we were allocated 2.5k from Safer Leeds to provide target hardening to vulnerable tenants that were not ALMO residents.. The chart below illustrates the number of properties target hardened.



Status	Number of jobs
Cancelled	1
Client Unavailable	32
Not Interested	1
Nothing Needed	30
Target Hardened	422
Grand Total	486



Council	Owner Occupied	Grand Total
474	12	486

10.3 All clients received a post service evaluation, which generated a 55% response rate. Of those clients, 99.8% were satisfied with the service provided by Casac and 96% state that they feel safer as a direct result.

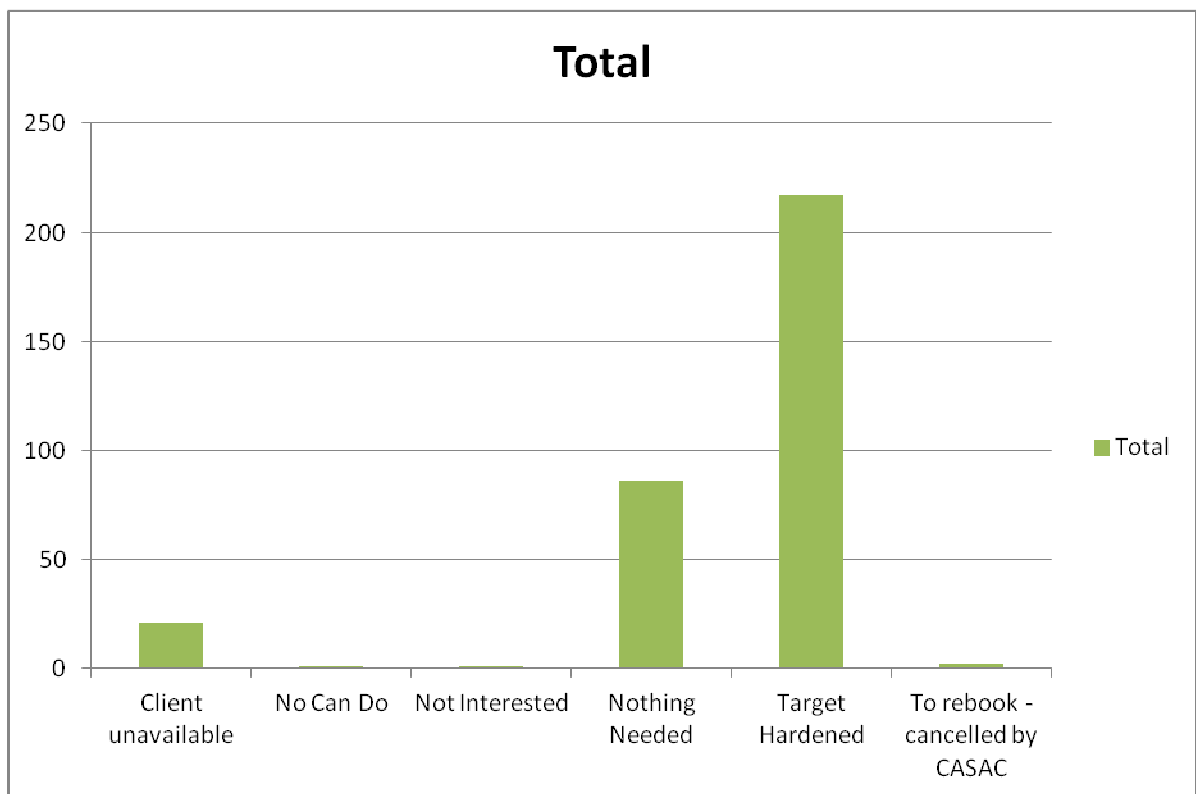
10.4 A successful year for the ward, the additional target hardening of properties alongside robust offender management from the neighbourhood policing team have contributed towards a significant reduction in burglaries, at the end of the financial year we saw a reduction of 39.9% equivalent to 119 less burglaries reported compared to the previous year. The ward is now ranked 11th across the city compared to ranking 9th during 2011/12.

11. Garforth & Villages Burglary Projects

11.1 Target Hardening Initiative - The Kippax & Methley ward had the least burglaries reported during the last financial year and the Garforth & Swillington ward was ranked 30th across the city.

11.2 Safer Leeds worked closely with Aire Valley Homes, CASAC and the neighbourhood policing team to develop a proactive burglary project to prevent an increase in burglary and increase security of Aire Valley Homes properties analysis of burglary dwelling at Aire Valley Homes properties compiled by Safer Leeds showed little evidence of issues relating to the euro profile lock. The project included fitting two sash jammers to each household to provide a secondary lock alongside additional target hardening such as window locks. The project was funded by Aire Valley Homes and overall expenditure on target hardening was £23,035.80.

11.3 **CASAC 60 Day Project in the villages – 31st March 2013**



Status	Number of jobs
Client unavailable	21
No Can Do	1
Not Interested	1
Nothing Needed	86
Target Hardened	217
To rebook - cancelled by CASAC	2
Grand Total	328

12. Immobilise

- 12.1 Immobilise is the world's largest register of possession ownership details and together with its sister sites the Police's NMPR (www.thenmpr.com) and CheckMEND (www.checkmend.com), forms a very effective tool in helping to reduce crime and repatriate recovered personal property to its rightful owners. Immobilise can be used by members of the public and businesses to register their valued possessions or company assets, and exclusive to Immobilise all account holders registered items and ownership details are viewable on the Police national property database. This online checking service is used by all UK Police forces to trace owners of lost and stolen property. In addition Immobilise is checked daily by a huge range of recovery agencies and lost property offices. As a direct result of Immobilise property is returned or information collected that assists the Police in investigating criminal activity including stolen goods.
- 12.2 Aire Valley Homes have purchased two pieces of equipment and a hand held scanner and are working closely with the Garforth Neighbourhood policing team to promote this FREE service to residents in the area. The initiative was launched in Jan 2013 and PCSO'S have been visiting properties to encourage residents to register their property. In addition plans are being developed to take the equipment into local high schools to register mobile phones to reduce theft from persons.

13. Distraction Burglary Events

- 13.1 Bogus/ Distraction burglaries were highlighted across the area as a concern due to the high proportion of elderly/vulnerable residents. Although in the past distraction burglaries have been sporadic it was agreed to take a proactive approach to ensure that residents were empowered with the appropriate knowledge to reduce the risk of opportunities of becoming future victims. In partnership with the 'Feeling Good Factor Theatre Company', Safer Leeds, Aire Valley Homes, Trading standards, West Yorkshire Fire service and the Neighbourhood Policing Team 10 interactive events were delivered during Jan – March 2013 at the locations outlined below. The events were funded and supported by local Ward Councillors.
- Churchville House Community Centre Micklefield
 - Mickletown Community Centre - Methley
 - Valley Ridge Community Centre – Kippax
 - East Garforth Community Centre - Garforth
 - Primrose House Community Centre – Swillington
 - Westbourne Gardens Community Centre – Garforth
 - Crosshills Court Community Centre – Kippax
 - Hollins Grove Community Centre – Allerton Bywater
 - Church Gardens Community Centre – Garforth
 - Victoria Close Community Centre – Allerton Bywater

13.2 Overall the events were successful and a really enthusiastic and appreciative audience, and has been the case for all the sessions. In total 164 residents attended the sessions. In addition crime reduction packs tailored to the elderly which included tin safes, magnifying glass for ID, blind spot mirrors to check at the door were purchased and issued by Aire Valley Homes. All those attended were offered door safety chains if they didn't already have one fitted – Several owner occupier residents were identified as been eligible for free security upgrades and were referred to Care and Repair.

13.3 Below are a sample of the comments raised by the residents highlighted in the evaluation forms:

- **What did you find most useful about the Workshop?**

'Lots of useful information' 'professional way of getting the message across' 'the way it was portrayed' 'everything' 'very interesting you don't think that older people would also rob you' 'everything made you think twice' 'I got a lot of tips' 'the scenes from the theatre company dealing with door step callers it will help me to deal with this if the need arises' 'A general reminder of what to do and what not to do'

- **Will you do anything differently following the sessions?**

'Be more aware of risks' 'not answer the door if do not recognise through the spy hole' 'Be more aware and be on guard' 'keep door locked and put chain on when answering the door' 'be more vigilant' 'lock door and only put chain on when answering the door' 'put chain on' 'use chain and not be afraid to say no' 'Have a chain fitted' 'Always use the chain' 'Don't be afraid to say No'

14. Most Active / Amber Nominals / Burglary Group- The group continues to meet on a six weekly basis and looks at how best to manage individuals offending behaviour through offering support through targeted services or taking enforcement action. The youth offending service have widened their remit to offer voluntary support to those wishing to engage outside of the criminal justice system. We have developed close working relationships with targeted services and refer into guidance and support structures.

14.1 Neighbourhood Management Tasking Key Achievements 2012/13 - The eleven neighbourhood management tasking teams continue to meet six weekly and are still firmly embedded into agencies day to day business. Members continue to be invited to attend and support meetings. This is not an exhaustive list of activities but includes key achievements from each of the neighbourhood management tasking teams within the Outer East Area.

15. Temple Newsam

- 15.1 **Operation Bellwether** - a universal operation covering hot spots to reduce burglary dwelling within the Division. Additional resources have been deployed into the Whinmoor, Swarcliffe & Halton / Whitkirk area. PSCO's have conducted high visibility patrols, attrition visits and crime prevention.
- 15.2 **Operation Bantamoor** - A specific operation to target drug dealers in the Halton Moor Area- Drugs warrants have been executed on Kendal Drive and arrests have made for drug offences – We have been working closely with East North East Homes and Leeds Anti-Social Behaviour Team re ASB enforcement .
- 15.3 **Operation Bowward** - A district burglary initiative which involved the Neighbourhood Policing Team and the execution of warrants on the Halton Moor Estate.
- 15.4 **Operation Bushminster** - A burglary imitative which involved leaflet drops with the Neighbourhood Policing Team and Leeds anti-social behaviour team.
- 15.5 Temple Newsam has benefited from Outer East Area Committee funding to provide a portable CCTV camera which can be sited in problem areas to identify environmental problems such as fly tipping, graffiti hotspots.
- 15.6 Area Committee funds have been e used to improve target hardening in the Temple Newsam area through additional safety measures for sheds and outhouses
- 15.7 A three day operation champion was conducted on 19th, 20th and 21st Feb targeting the Halton Moor and Osmondthorpe area. A range of partners were involved which included , WYP, West Yorkshire Fire service, Leeds Anti-Social Behaviour Team, East North East Homes , HMRC, Scrap metal licensing, Estate Caretakers, off Road bikers (WYP) and the environmental locality team and HM courts warrants officers . Visits were made to victims and perpetrators of anti-social behaviour
- 15.8 The days were a massive success , the results were as follows:
- 280 Vehicles stop checked
 - 4 Vehicles seized d ue to no insurance/license
 - 3 Offenders reported for summons
 - 4 EPNS (6 Points for no insurance)
 - 1 EPN for speeding
 - 6 EPNS for bald tyres
 - 13 vehicle defect rectification notices issued
 - 6 NEPN for seatbelts /MOT
 - 5 X Section 59's issued for vehicle nuisance
 - 1 Bike seized
 - Set of stolen number plates recovered

- £2807 worth of fines dealt with and 3 arrests for non-payment of fines resulting in one offender going to prison for 43 days
- 2 street warnings for cannabis use
- 16 home fire safety checks carried out
- 5 skips deployed

15.9 The Temple Newsam Neighbourhood Policing Team and Environmental Services reports general improvements to the environment. More recently partner agencies have been exploring new innovative ideas how to involve the local community and more young people in taking pride in their area and creating a better place to live. The Temple Newsam Schools Cluster, Youth Service and East North East Homes gave a joint presentation to a group of young people on how they could get involved which resulted in several young people offering to renovate a sponsored roundabout. The Tasking team gained the necessary permissions and purchased paint and equipment. The project was fully supported by local ward councillors and funded by the Outer East Area Committee.

16. Crossgates/Whinmoor

16.1 Op Bellwether is a universal operation covering hot spots to reduce burglary dwelling within the Division. Additional resources have been deployed into the Whinmoor, Swarcliffe & Halton / Whitkirk area. PSCO's have conducted high visibility patrols, attrition visits and crime prevention.

16.2 On Saturday 18th August the local Swarcliffe Community came together for what is hopefully to become the Annual Swarcliffe Gala. The Gala was the result of the 'Well Being' fund awarded by local ward councillors through Outer East Area Committee and additional funding from the Seacroft and Manston cluster, the event was co-ordinated by Aire Valley Homes and the Youth Service. The event was supported by your Local Ward Councillors other agencies including the RSPCA, the Swarcliffe Neighbourhood Policing Team, the Swarcliffe Good Neighbours Scheme, Inside Outside Group, Swarcliffe Children's Centre, Yorkshire Housing, Stanks Fire station and many more.

16.3 Two six weeks multi agency burglary projects were delivered in the Whinmoor and Swarcliffe area.

16.4 In September two partnership events to promote responsible dog owners were conducted with the RSPCA supported by Aire Valley Homes and West Yorkshire Police at Tesco Seacroft and Sainsbury Colton. During the events 168 dogs were registered, 76 dogs were micro chipped alongside offering neutering vouchers. The RSPCA received donations of £822.91.

17. Garforth, Swillington + Kippax & Methley

- 17.1 Arrests have been made over ATM cloning scam in Garforth and Police activity to alert local people and catch criminals after incidents on Main Street.
- 17.2 Ongoing partnership work between environmental locality team and PCSO's to combat litter and dog fouling has led to several notices being served during the year.
- 17.3 A multi-agency burglary project delivered across Garforth and Villages between Jan-March 2013 . Funding has also been secured for additional cold calling zones i across the area (anticipated implementation June/July 2013)
- 17.4 4 covert cameras funded to address fly tipping in hotspot areas.
- 17.5 New 'no cold calling zones' introduced in Kippax' working in partnership with Trading Standards.
- 17.6 Bogus caller project – Area committees funded a covert camera and 500 leaflets through tasking funds.
- 17.7 A problem solving approach was taken by the Neighbourhood policing team and the environmental locality team re the dumping of tyres at the old Boot & Shoe site, in excess of 500 tyres were tipped – Smartwater was utilised to mark tyres and led to the successful conviction of a flytipper.
- 17.8 Good partnership work between the neighbourhood policing team, housing and Leeds Anti-social Behaviour Team resulted in two Aire Valley Homes tenants being evicted from their homes as a result of longstanding anti-social behaviour (one in Kippax and one in Allerton ByWater).
- 17.9 Fly Tipping at Micklefield – Practical measures taken in Micklefield involving a barrier installing to prevent further flytipping
- 17.10 Another example of close partnership work solved the problem of agricultural waste being washed out on the industrial estate in Garforth. The perpetrator was identified and warned about further enforcement action. No further reports have been received to date.
- 17.11 Continued partnership work between Leeds Anti-Social Behaviour Unit, Aire Valley Homes and the neighbourhood policing team giving priority action and pursuing several cases of anti-social behaviour in the villages.

18. Thematic Sub Groups and Activities

18.1 Off Road Bikes / West Yorkshire Police

18.2 The Outer East Area Committee (June 2012) contributed towards the lease costs to retain 2 off road motorcycles within the division for a 12 months period.

18.3 The information below outlines some performance information and examples of successes in the Outer East Area Committee area:

July- September 2012

Stop searches: 12

Calls attended: 21

Section 59 warnings: 28

Vehicle seizures: 11

Arrests/Summons: 14

October- December 2012

Stop searches: 9

Calls attended: 34

Section 59 warnings: 18

Vehicle seizures: 4

Arrests/Summons: 2

Jan- March 2013

Stop searches: 7

Calls attended: 47

Section 59 warnings: 25

Vehicle seizures: 9

Arrests/Summons: 11

Stolen Vehicles recovered: 1

Optimal Patrols: 8

18.4 The unit is prevalent along with Leeds City Council Riders at major events such as Party in the Park, Opera in the Park, festivals and events at Temple Newsam. This summer we were involved in the policing of the Olympic Torch Relay as it passed through the wards. Some examples of work include:

- 18.5 The recovery of a stolen horse trailer, worth £2500, from a farm in Methley where it had been stashed away. A man from Swillington was arrested for the theft and is currently on bail. The trailer has been returned to its owner.
- 18.6 A speeding Audi driver was stopped after being recorded at 51mph in a 30mph limit in Swillington. He was dealt with at court and fined £700 and issued with 8 penalty points.
- 18.7 Following a report of an assault near Kippax sports centre where a girl was punched and kicked to the ground officers assisted rounding up three suspects who were arrested and charged with the assault.
- 18.8 The off road unit were deployed to Smeaton Approach following reports of dangerous riding. The young person was reported for summons for several driving offences including due care and driving without a licence and insurance.
- 18.9 There had been several calls about a pair of green motorcycles on The Valley in Halton tearing up the grass. Officers from the local Neighbourhood Policing Team sighted the pair riding down Selby Road and called in the off road unit. The pair were tracked to a house on the Dunhill Estate. The unit used their power of entry to get into the shed where the two green Kawasaki KX125cc motorcycles, red hot and covered in mud, were being kept. The motorcycles valued at around £700 each were seized and destroyed.
- 18.10 A learner driver decided to go for a drive in his grandfather's new car without insurance or any L plates displayed. He was stopped on Stanks Drive and the car was seized and he was issued with a fixed penalty ticket.
- 18.11 Following complaints of nuisance vehicles around Halton Moor Road patrols have been increased. While parked up covering the road officers watched as a Yamaha Quad and Yamaha R6 motorcycle riding in tandem decided it would be a good idea to pull wheelies and speed down the road. They were promptly stopped, issued with section 59 warnings, penalty tickets for their tiny number plates and made to attend at a local garage to have tyres replaced.
- 18.12 The footpath leading to Chippys Quarry behind Stanks Drive is a popular place for fishing. It had become a place where people thought it safe enough from the police to smoke cannabis until the off road unit were alerted. Several stop searches and three home office warnings for possession of cannabis have addressed the problem.
- 18.13 A man was stopped after jumping a red light in Garforth. He received 3 penalty points and a £60 fine.
- 18.14 Several stolen vehicles have been recovered including a scooter which was abandoned on Ash Tree Gardens.

- 18.15 The Off Road Unit works closely with Leeds City Council Parks Watch riders providing a multi- agency partnership approach to problem solving. On one particular tour while working with the LCC riders, they received a call from a member of the public reporting that a group of youths were riding a small but fast off road pit bike in the public nature reserve near to Red Hall Vale. As police were working with LCC the unit quickly deployed to the location and between all three riders, were able to access the reserve via all entry/exit points and detain those involved. The youths who all admitted to riding the bike in turn received Sec 59 warnings and the bike was seized and crushed. The original caller was informed of our prompt action and highly commended our response.
- 18.16 Following on from an incident that occurred at the beginning of the year which involved a male falling approximately 30 feet from a disused railway bridge. The unit was first on scene owing to its off road capabilities and was able to administer first aid and stabilise the male. This incident was televised and was aired on BBC's Helicopter Hero's in November. This clearly demonstrated that the bikes are a valuable resource.
- 18.17 A man caught riding a Quad through Halton Moor Woods and on Halton Moor Road pleaded guilty to driving without a licence or insurance. He was fined £235 and received 8 penalty points on his driving licence. The quad was seized and destroyed.
- 18.18 The Bikers work closely with LeedsWatch . CCTV reports involving motorcycles are shared with the off road bikers which is a valuable tool identifying problem vehicles and drivers. One compilation of footage from Halton Moor Avenue, led to the identification of the suspects who were clearly identifiable and even took their motorcycles into their houses. Three suspects were visited at home, interviewed and admitted careless driving, driving without licences or insurance and all were reported for summons.
- 18.19 Neighbourhood officers sighted two off road motorcycles which had been causing a nuisance around Swarcliffe and Whinmoor on Naburn Approach. They directed the off road unit in and one of the males was stopped on the rugby pitches near to Coal Road. Both motorcycles were seized and the one man received a final written warning form the Youth Offending team and the other given a reprimand.
- 18.20 Two PCSO's called in the unit one evening when they saw a man riding a motorcycle without any lights on Selby Road towards Halton Moor. The man was on Coronation Parade when we caught up with him and he promptly pulled over and reported for summons.
- 18.21 Following an increase in complaints around the Stanks/Swarcliffe area patrols have been stepped up. On one patrol the unit stopped a group of 4 riders who were riding in convoy doing circuits of the estate much to the annoyance of residents. One of

the scooters appeared legitimate displaying a registration and L plates but on closer inspection the number plate did not match the scooter and the rider was trying to pass it off as genuine. The vehicle was seized and in addition to the offences of no insurance and no licence the rider was reported for fraud by false representation. Whilst waiting for the recovery truck to arrive another speeding scooter came along Stanks drive towards the officers. He was stopped due to his speed.

- 18.22 A man from Garforth was caught riding his motorcycle without a driving licence or insurance pleaded not guilty and we went to trial at court. He was found guilty and fined £675 with 8 penalty points endorsed on his driving licence. His motorcycle was seized and destroyed.
- 18.23 Update: a 15 year old male from Kippax who was caught in possession of cannabis following a stop and search by the off road unit at Kippax leisure centre was placed on a youth rehabilitation order by the Youth Court and subject to a curfew for three months.
- 18.24 Two poachers who were caught by the off road unit trespassing and hunting with dogs on land near to Strikes Garden Centre on Selby Road pleaded guilty to Daytime Poaching at Court. They were fined £200.
- 18.25 Following up on a series calls about a nuisance black motorcycle tearing up the farmers field off Church Lane, Micklefield patrols were increased. The riders were only using the motorcycle for short bursts in an effort to avoid being caught. When a fresh call came in the unit were only around the corner. The motorcycle was seized.

19. Hate Crime MARAC

- 19.1 The hate Crime Multi-Agency Risk Assessment Conference (HC MARAC) continues to meet monthly. The overall objectives of the group is to:
- Support and assist victims of hate crime in order to protect them and ensure that they are not re-victimised.
 - Ensure that effective co-ordinated multi agency enforcement action is taken against perpetrators of hate crime to prevent their re-offending and to ensure successful prosecution outcomes at Court.
 - Contribute to the "Hate crime reduction agenda in Leeds".
- 19.2 During 2012/13 we have received positive feedback from residents, exits surveys illustrate that they are happy with the response and support they have received from partner agencies.

19.3 Overall the Outer East area has shown a decrease of 19% in recorded hate crimes reported (see chart below)

Outer EAST		
Incidents	Change	% Change
50	-8	-19.0%

19.4 The chart below illustrates hate crimes by ward:

CROSS GATES & WHINMOOR			TEMPLE NEWSAM			GARFORTH SWILLINGTON &			KIPPAX & METHLEY		
Incidents	Change	% Change	Incidents	Change	% Change	Incidents	Change	% Change	Incidents	Change	% Change
11	-9	-45.0%	18	-6	-25.0%	11	7	175.0%	10	0	0.0%

20. Domestic Violence MARAC

20.1 The North East Divisional MARAC continues to meet monthly to develop multi-agency interventions to support victims of domestic violence. Overall a very successful year in relation to reduction of repeat victimisation of cases managed through the MARAC.

21. Leeds Anti-Social Behaviour Team

21.1 LASBT data for 2012/13 has been drawn from on a total of 528 surveys from 1060 named victims (an overall response rate of 50%)

21.2 The charts below outline by ward the number of enquiries received, new cases opened and a summary of the legal outcomes.

LASBT New Cases Opened	
Ward	Grand Total
Temple Newsam	62
Cross Gates & Whinmoor	47
Garforth & Swillington	15
Kippax & Methley	30

LASBT Enquiries Received	
Ward	Grand Total
Temple Newsam	70
Cross Gates & Whinmoor	88
Garforth & Swillington	29
Kippax & Methley	57

LASBT Legal Outcomes 2012/13					
Ward	Closure Notice extended	Possession granted	Suspended Possession Order	Undertaking agreed	Grand Total
Temple Newsam		1	3	1	5
Cross Gates & Whinmoor	1				1
Garforth & Swillington					0
Kippax & Methley					0

22. Ward Performance

Outer East							
Count of URN	Q12 How satisfied are you with the overall service provided by the Leeds ASB Team?						
PersonWardCode	Very Satisfied	Satisfied	Neither Satisfied Nor Dissatisfied	Dissatisfied	Very Dissatisfied	Grand Total	% 'Satisfied' or 'Very Satisfied'
Cross Gates and Whinmoor	11	3		2	1	17	82.4%
Garforth and Swillington	4					4	100.0%
Kippax and Methley	4	6				10	100.0%
Temple Newsam	9	13		1		23	95.7%
Grand Total	28	22		3	1	54	92.6%

23. Overall Performance of North East Divisional Community Safety Partnership and Ward crime statistics - MARCH 2013

Performance Headlines

- Total Crime across North East Police Division reduced by 10.6% (2,290 less crimes) during 2012/13 compared with the previous year , an improvement on the 7% reduction the previous year
- Overall Year to date offences for burglary dwelling across North East Leeds are down 28.35% on the same period last year. (833 less offences)
- Overall crime across the Outer East area committee area has reduced 17.5% (961 less crimes)
- Highest confidence rate in local policing across West Yorkshire
- Reduction of overall serious acquisitive crime offences
- Reduced perception of ASB increasing in local areas
- Reduced levels of serious violent crime

24. Crime and ASB 2012/13

24.1 Overall a really successful year in relation to recorded crime and anti-social behaviour. Across the Outer East Area Committee there has been an overall reduction of 8.9% (crime) equivalent to 421 less crimes.

24.2 The below statistics show crime from 1st April 2012 until March 31st 2013 by ward areas compared to the same dates for the previous year.

Recorded Crime by Ward 01/04/2012 to 31/03/2013	CROSS GATES & WHINMOOR			TEMPLE NEWSAM			GARFORTH & SWILLINGTON			KIPPAX & METHLEY		
	Offences	Change	% Change	Offences	Change	% Change	Offences	Change	% Change	Offences	Change	% Change
Burglary Dwelling	179	-119	-39.9%	184	-64	-25.8%	66	-24	-26.7%	52	-25	-32.5%
Burglary Elsewhere	122	-14	-10.3%	180	50	38.5%	78	5	6.8%	89	-27	-23.3%
Criminal Damage	271	-35	-11.4%	227	-27	-10.6%	108	3	2.9%	109	-27	-19.9%
Drugs Offences	49	2	4.3%	73	-14	-16.1%	23	-15	-39.5%	15	-23	-60.5%
Fraud & Forgery	41	3	7.9%	71	46	184.0%	23	-5	-17.9%	13	-3	-18.8%
Handling	2	-3	-60.0%	9	3	50.0%	1	0	0.0%	0	-3	-100.0%
Other Crime	20	-1	-4.8%	27	-1	-3.6%	12	6	100.0%	13	1	8.3%
Other Theft	368	23	6.7%	436	-70	-13.8%	216	-8	-3.6%	155	-18	-10.4%
Robbery	17	4	30.8%	15	2	15.4%	3	-1	-25.0%	3	2	200.0%
Sexual Offences	17	7	70.0%	15	-7	-31.8%	13	1	8.3%	10	-4	-28.6%
Theft from Motor Vehicle	78	15	23.8%	111	-10	-8.3%	56	4	7.7%	92	5	5.7%
Theft of Motor Vehicle	27	0	0.0%	51	16	45.7%	18	2	12.5%	26	-2	-7.1%
Violent Crime	209	4	2.0%	182	-18	-9.0%	71	-43	-37.7%	90	-14	-13.5%
Recorded Crime Total	1400	-114	-7.5%	1581	-94	-5.6%	688	-75	-9.8%	667	-138	-17.1%

24.3 The below statistics show anti-social behaviour calls recorded by West Yorkshire Police from 1st April 2012 until March 31st 2013 by area committee and further broken down into ward areas. The Outer East area has seen an overall reduction of 28.1% (763 less incidents reported).

OUTER EAST		
Incidents	Change	% Change
1957	-763	-28.1%

Incidents by Ward 01/04/2012 to 31/03/2013	CROSS GATES & WHINMOOR			TEMPLE NEWSAM			GARFORTH & SWILLINGTON			KIPPAX & METHLEY		
	Incidents	Change	% Change	Incidents	Change	% Change	Incidents	Change	% Change	Incidents	Change	% Change
ASB Incidents	617	-301	-32.8%	540	-175	-24.5%	296	-200	-40.3%	504	-87	-14.7%

25. Public Confidence and User Satisfaction in the Police (Crossgates/Whinmoor/Temple Newsam NPT)

Public Confidence	March 2012	March 2013	
Confidence in local policing	57.2%	61.8%	+ 4.6%
Overall Satisfaction	83.9%	90.0%	+6.1%
Perceptions of ASB increasing	8.6%	10.2%	+1.6%

26. Public Confidence and User Satisfaction in the Police (Garforth & Swillington, Kippax & Methley)

Public Confidence	March 2012	March 2013	
Confidence in local policing	63.1%	62.3%	-1.2%
Overall Satisfaction	85.6%	85.2%	-0.4%
% of residents who think ASB has increased	10.7%	9.9%	-0.8%

27. Corporate Consideration

28. Consultation and Engagement

28.1 The North East Divisional Safety partnership works in partnership with the voluntary and community sector and when necessary carries out statutory consultation as appropriate.

29. Equality and Diversity / Cohesion and Integration

29.1 Consideration is given to the equality impact of delivering the Safer Leeds strategy across North East Police Division. Where a negative equality impact is identified action will be taken to mitigate the impact or risk.

30. Council Policies and City Priorities

30.1 The North East Divisional community safety partnership delivers directly against the Safer and Stronger Communities Board Partnership plan 2011-2015.

31. Resource and Value for Money

31.1 The work undertaken by the DCSP is underpinned by maximisation of resources through effective partnership work.

32. Legal Implications, Access to Information and Call In

32.1 There are no exempt or confidential information contained in this report

32.2 There are no legal implications associated with this report

32.3 There are no key decisions associated with this report, so it is not subject to call in

33. Risk Management

33.1 There are no major risks associated with the content of this report

34. Conclusions

34.1 Overall a very successful year for North East in relation to overall crime reduction, public confidence and increased performance and perceptions in dealing with anti-social behaviour. The DCSP will continue to prioritise burglary dwelling during 2013/14 to ensure reductions are sustained and further improvements are made.

35. Recommendations

35.1 Members are asked to continue supporting the Divisional Community Safety Partnership in relation to prioritising and tackling Burglary Dwelling during 2013/14 through partnership work at neighbourhood level.

36. Background Documents

37. None

The background documents listed in this section are available to download from the Council's website, unless they contain confidential or exempt information. The list of background documents does not include published works.

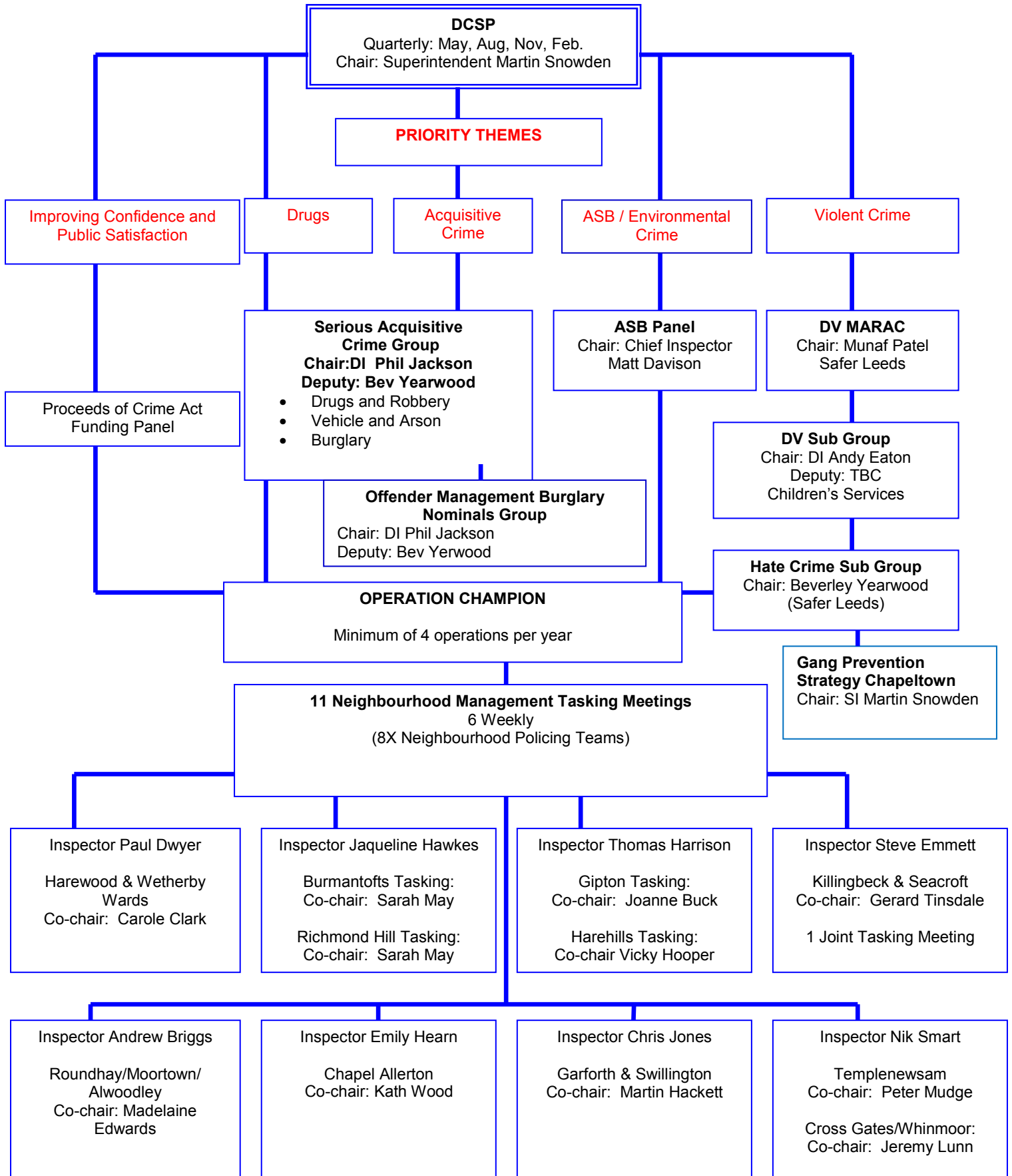
Appendix A

North East Division
Divisional

Community

Safety

Partnership



Appendix B

Garforth and Villages				
POCA Ref	Date	Brief Description	Organisation	Amount Paid
462	08/05/2012	Globe Inclusive Crafts - working with ages 8 - 18yrs. Arts and Crafts.	Globe Young Peoples Community Account	£250
464	08/05/2012	Litter Pick sticks for binannual litter pick in Garforth - clears up flytipping and smartens up streets and ginnels.	Garforth Flood Support Group	£230
449	05/04/2012	Production of High School Musical 2 - workshops twice a wk(Thursday and Fridays 7-9pm) culminating in 2 performances at Garforth Academy on May 11th & 12th 2012	St Marys Youth Theatre	£250
525	25/09/2012	Yorkshire Amateurs u15's Football Kit - To help towards the financial cost of replacing the football kits of an entire u15's football team. The estimated costs are £1050 and we envisage buying the kits by 1st October 2012	Yorkshire Amateurs Football Club	£250
566	18/02/2013	Kitchen Renovation - We have fundraised £800 to improve the kitchen at our community office out of which we support adults with learning disabilities. We need additional funds to purchase kitchen units.	The Wilf Ward Family Trust	£250
567	18/02/2013	Micklefield Male Voice Choir - To provide and update musical equipment buy new music and provide uniforms.	Micklefield Male Voice Choir	£250
462	08/05/2012	Globe Inclusive Crafts - working with ages 8 - 18yrs. Arts and Crafts.	Globe Young Peoples Community Account	£250
464	08/05/2012	Litter Pick sticks for binannual litter pick in Garforth - clears up flytipping and smartens up streets and ginnels.	Garforth Flood Support Group	£230
449	05/04/2012	Production of High School Musical 2 - workshops twice a wk(Thursday and Fridays 7-9pm) culminating in 2 performances at Garforth Academy on May 11th & 12th 2012	St Marys Youth Theatre	£250

Temple Newsam				
POCA Ref	Date	Brief Description	Organisation	Amount Paid
441	03/04/2012	6th Whinmoor Scouts - 4th - 7th May - water activity camp at a Scout Water Activity Centre. This will involve canoeing, kayaking, team building and water safety for cubs and scouts ages 8-14. Need to buy lights, tent, ground sheets.	6th Whinmoor Scouts	£250
499	04/07/2012	New u8s Junior Football Team - Following on from our successful Whiz Kids program we now have the opportunity to develop and create a new u8s football team due to the popular demand from the local community. The funding will be put towards ever increasing costs in starting a new team.	Whinmoor Juniors FC	£250
517	05/09/2012	Mosaic Mural Project - The project will run from Monday – Friday, over half-term. We will be offering a drop-in art group, from 11am – 3pm, in which local residents can come to participate in the design and making of several mosaic murals, to be displayed within, or outside of the Centre.	Swarcliffe Childrens Centre	£250
518	07/09/2012	New Youth Rugby League Club - We are a new amateur club run, by volunteers, established in July 2012 in the Halton Moor area of Leeds. Our aim is to provide a safe and sociable environment for Juniors and youths to learn skills, personnel and group discipline, to encourage a healthy life style and to provide a solid base for progression with in sports and to help set personnel goals and targets for the future.	Halton Moor Storm a.r.l.c	£500
536	16/10/2012	Neighbourhood Swap - We are planning to conduct a neighbourhood Sweep; we plan to post a promotional leaflet through every door in Halton Moor, Osmondthorpe and Sutton Park (Selby Road) as we want to ensure that every person over 60 is aware of the scheme. This will enable HOPE to support even more local older people. It will also raise the profile of the organisation and we hope, will encourage more local people to volunteer.	Halton Moor and Osmonthorpe Project	£432
544	02/11/2012	Purchase of Portable Goal Posts - Following the Fas introduction of a 9v9 format for all under 11s/12s which becomes mandatory from the end of this season; there is now a new size goal which has been introduced. However the Fas are offering a 50% discount to clubs to purchase the new portable goal.	Whinmoor Juniors FC	£350
545	02/11/2012	Grimes Dyke Junk Play Project - The Project will encourage more children to get involved in play who do not want to participate in sports activities, build relationships and develop social skills as well as attempt to reduce bullying and reduce fall outs. Training staff and writing risk assessments - 3 sessions. Training year 3 mentors to help start the project with all pupils. Obtain metal secure storage container and suitable scrap parts.	Grimes Dyke Primary School PTA	£500
549	13/11/2012	Temple Newsam Park Run - It's a free weekly 5k	Parkrun.org.uk	£250

		run held every Saturday morning for all the family to come along and have a timed run for free which can be viewed on the parkrun web page and if we do get going it will be Temple Newsam parkrun date hopefully early January.		
552	13/11/2012	Disabled Access - Paving for courtyard - Improve disabled access to the courtyard from the amphitheatre by continuing the York stone path edge around the cobbles through the arch to the amphitheatre and address the cobbles under the arch. This would allow wheelchair access from the house all around the courtyard without the need to negotiate the cobbles. We intend to carry out the work as soon as funds and labourers (volunteers and ground staff) are available.	Friends of Temple Newsam Park	£250
553	13/11/2012	Set up of a beginners guitar club - Setting up of a beginners guitar club to commence in January 2013.	Whinmoor St Pauls PTA	£250
554	15/01/2013	Hot Water Boiler for Kitchen of Colton Methodist Church - The building is used daily by about 15 different groups mainly community based.	Colton Methodist Church	£340
565	18/02/2013	Hot Water Boiler for Kitchen of Colton Methodist Church - The building is used daily by about 15 different groups mainly community based.	H20 Unity	£250
545	02/11/2012	Grimes Dyke Junk Play Project - The Project will encourage more children to get involved in play who do not want to participate in sports activities, build relationships and develop social skills as well as attempt to reduce bullying and reduce fall outs. Training staff and writing risk assessments - 3 sessions. Training year 3 mentors to help start the project with all pupils. Obtain metal secure storage container and suitable scrap parts.	Grimes Dyke Primary School PTA	£250